

Qmtrin®

Commissioning instructions

Frequency generator



FQT GENER



Content

Content.....	2
1 Introduction.....	3
2 Operation	3
2 Technical data	4
4 Installation	4
5 COM Port Installation	6
6 Start FQT GENER	9
7 Function WISH	12
8 Scope of delivery.....	12
9 Support and delivery	12
10 Certificate.....	13
Warranty card.....	15

1 Introduction

Thank you for choosing to use a frequency generator: software FQT GENER Qmtrín® with USB external drive.

www.qmtronic.com

2 Operation

Frequency generator FQT Gener Qmtrín® USB external unit must be stored and operated in a clean and dry environment, at room temperature, do not cover! If exposed to low temperatures, the frequency generator must be allowed to slowly warm to room temperature.

The FQT GENER USB generator is connected to a PC via a USB cable. The power cord is plugged into the socket of the frequency generator, the plug of the power adapter is plugged into the AV 230 V, 50 Hz socket.

It is necessary to connect the frequency generator to the same USB port of the PC at all times.

The FQT GENER frequency generator must only be operated under supervision and the mains plug must be disconnected from the mains at the end of operation. When carrying, it is necessary to disconnect the power supply and the connecting cable from the USB unit and carefully insert it into the transport case.

The frequency generator is equipped with an integrated frequency generator. Frequencies can be preset in the program in the range from 0 to 2 MHz. You can enter a fixed frequency or frequency shift.

The FQT GENER frequency generator is controlled using a program that is included in the delivery. The operating instructions for the program are installed on the PC desktop at the same time as the program is installed.

2 Technical data

Voltage:	24 V DC
Max. current:	1,5 A
Power:	max. 45 W
Programmed frequency:	0 – 2 MHz
Dimensions:	360 x 80 x 10 mm
Weight:	1,2 kg

4 Installation

CAUTION: The USB external drive is not connected to the PC before installation.

The software is installed directly or indirectly by the supplier using remote access, or the installation package can be downloaded:

www.qmtronic.cz/clanky/datadownload/ifqt.html

In some cases, the FQ Tool program will be installed, which is free and FQT GENER can work with it.

After installation, 3 icons for FQT GENER will appear on the desktop:



FQT GENER - starting the program for frequency control generator (USB External unit must be connected correctly)



FQT Driver - program for installation and setting of the COM communication port

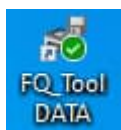


FQT Gener – operating instructions for the utility program

and in some cases 3 more icons for FQ Tool:



FQ Tool - running a program for compiling your own programs (batches)



FQ Tool DATA – all programs that are created in the FQ Tool are saved in this folder



FQ Tool CZ – operating instructions

The FQT GENER software can be updated. The automation is most often updated at the same time as the QM Therapy program if the update is released, or again with the FQ Tool at the link above. In both cases, the update package is downloaded and Setup.exe is clicked

ATTENTION: During updates, the COM Port is not reinstalled, even if its installation is offered - see chapter 5.

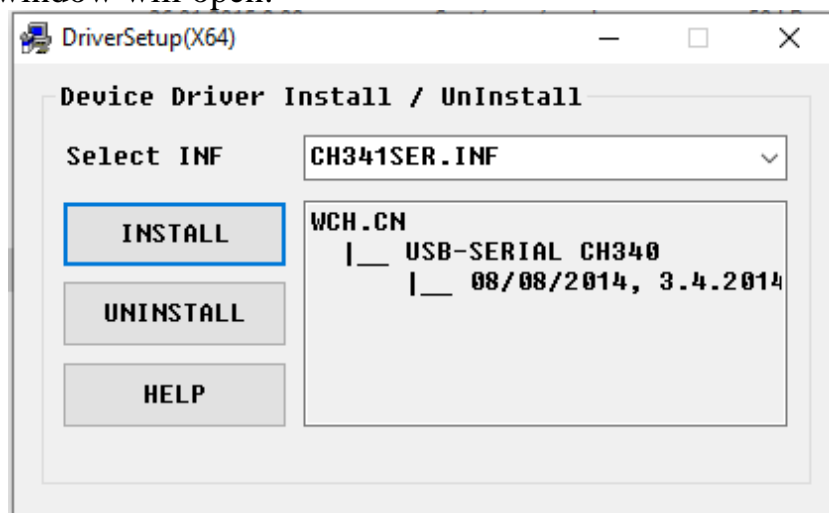
5 COM Port Installation

After installing the FQT Gener program, the correct port settings must be made before connecting the USB external unit (frequency generator) for the first time and before starting the FQT Gener program.

The port is installed immediately during the installation of the FQT Gener program described above. If necessary, you can change the port, or uninstall and reinstall it using the icon on the desktop:



The following window will open:



The **"INSTALL"** button is used to install the port drivers. The **"UNINSTAL"** button is used to uninstall in case of problems so that a new installation can be performed.

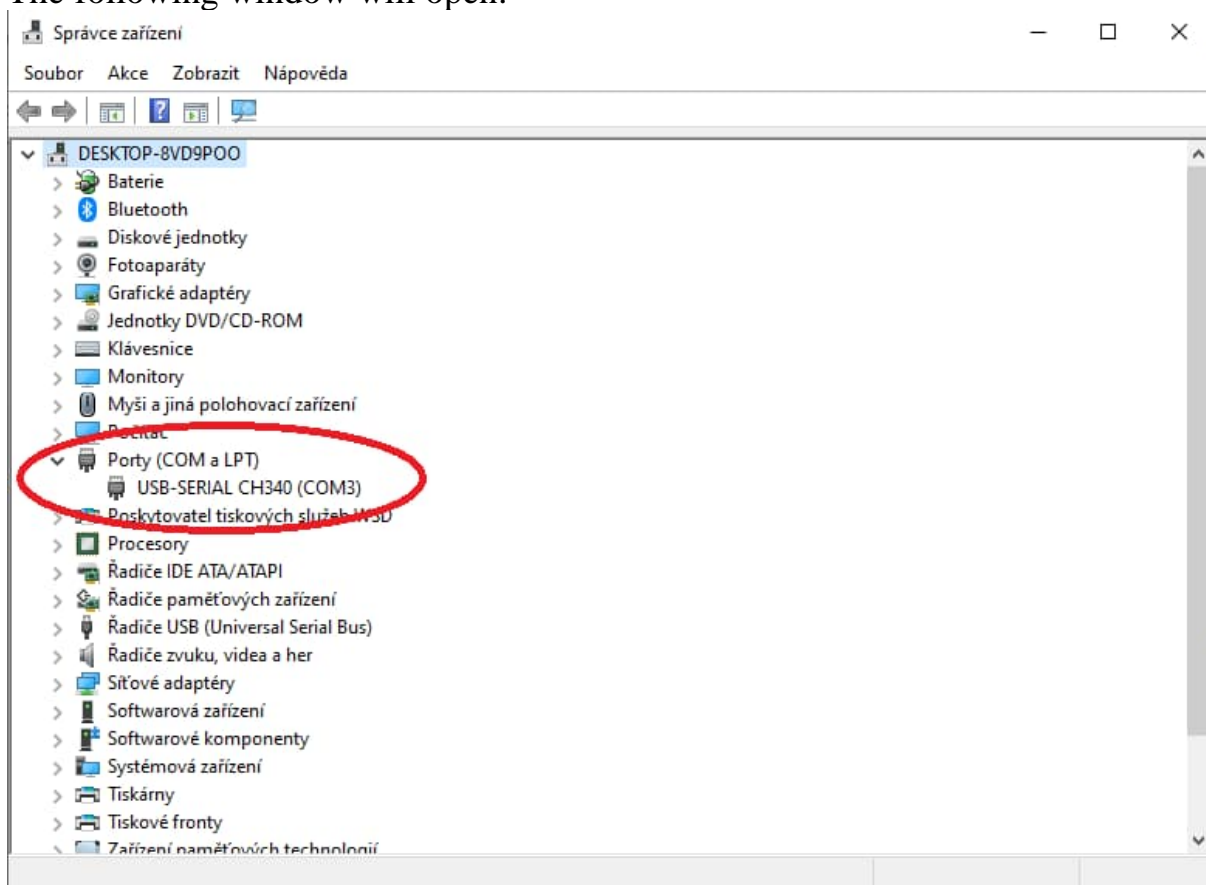
Then an external drive is connected with a USB cable. The drivers and COM Port will be installed automatically. You must wait for the installation program to make all the settings.

CAUTION: the same USB PC Port must always be used.

In exceptional cases, the COM Port will not be installed automatically after connecting the USB external drive. It is necessary to perform the installation manually, if possible, using the above icon, or directly in the PC system settings in the Device Manager.

The installed port appears on the system in Device Manager:
Control Panel / System and Security / System / Device Manager

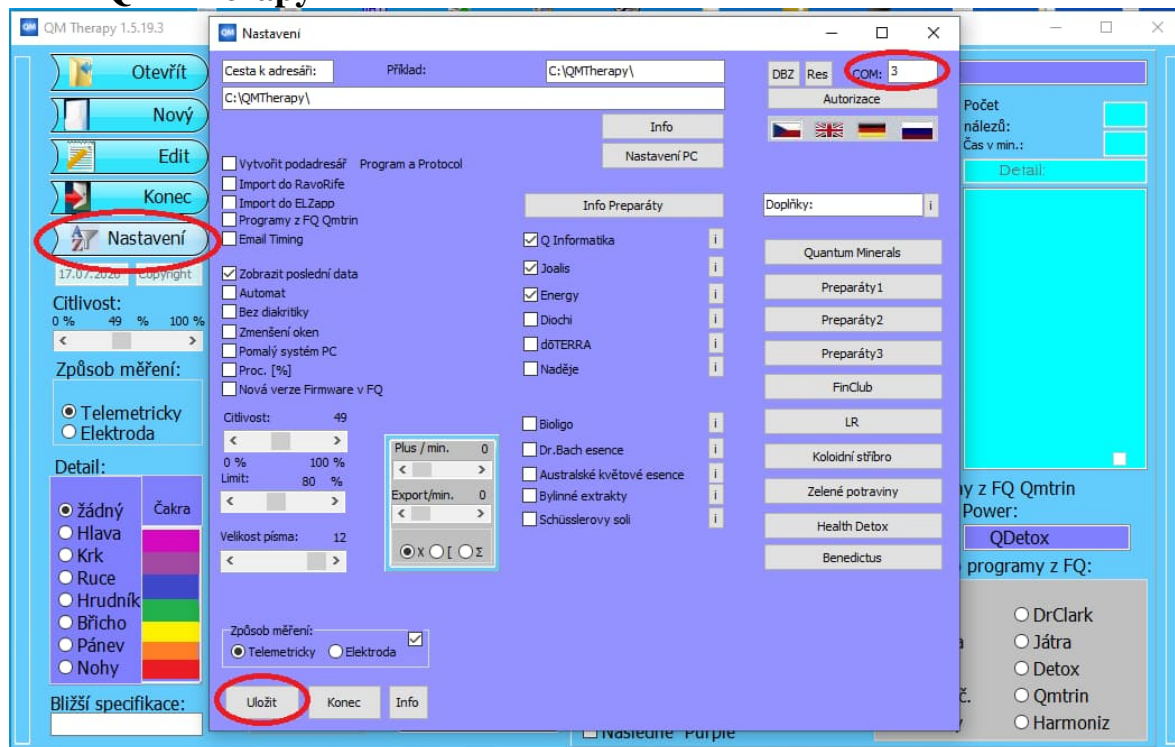
The following window will open:



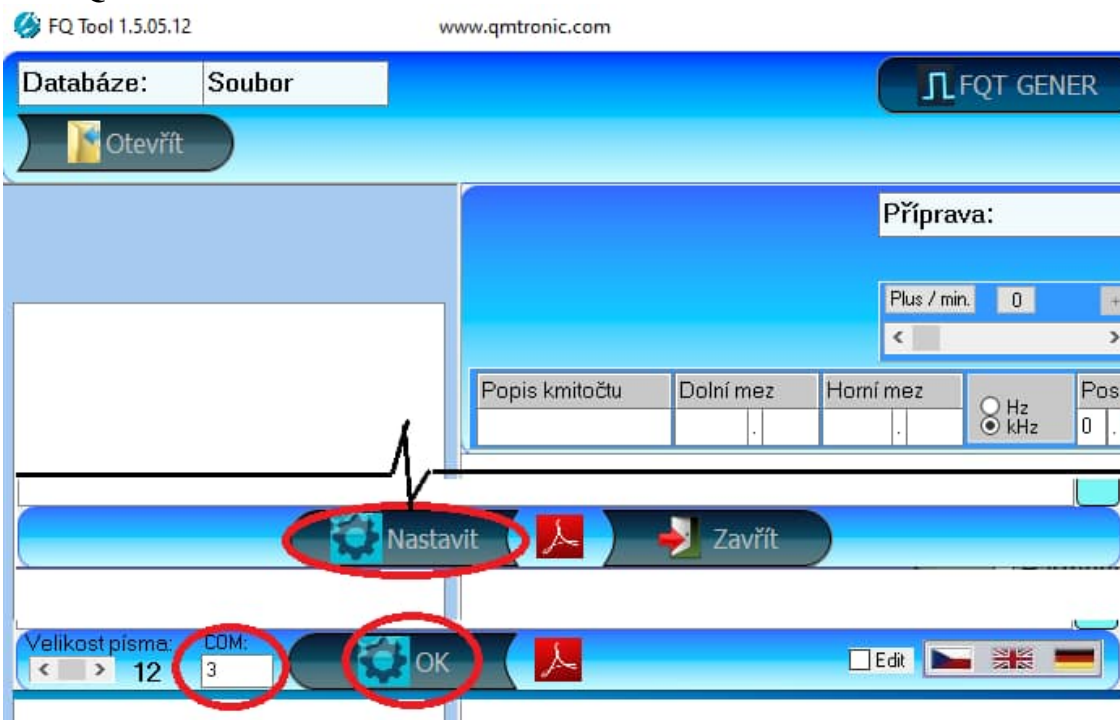
In this case, the USB COM port is assigned the number 3. If the number 3 is not assigned, the correct number must be entered into the program for the program to communicate with the port.

The number is entered in either QM Therapy or FQ Tool, in both cases in the settings. It doesn't matter which one.

QM Therapy



FQ Tool

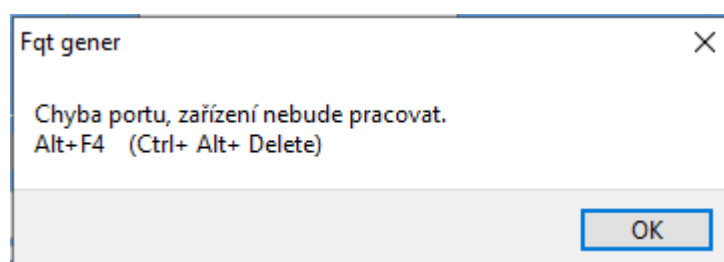


6 Start FQT GENER

Program FQT GENER starts by button:



If the USB external drive is not connected correctly or the COM Port is not paired, ie. if the correct COM port number is not entered, an error message is displayed:



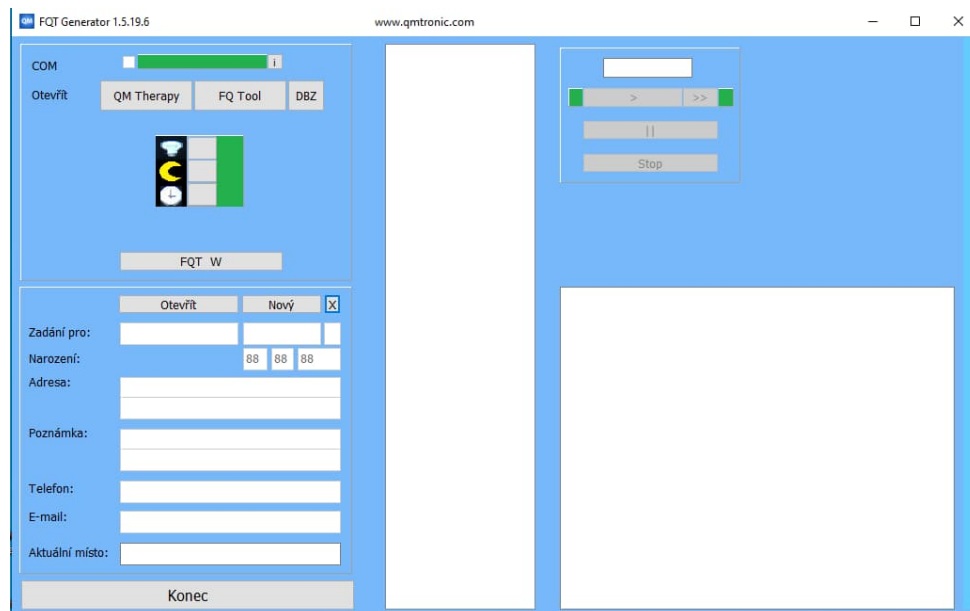
The error must be corrected

- 1) Restart the PC
- 2) Check the USB cable connection between the FQT GENER USB external unit and the PC.
- 3) Check the installation of the COM Port or reinstall the COM Port (chapter no. 5).
- 4) Check the number assigned to the COM Port. It is necessary to enter the same COM Port number into the QM Therapy or FQ Tool program (it does not matter which one).

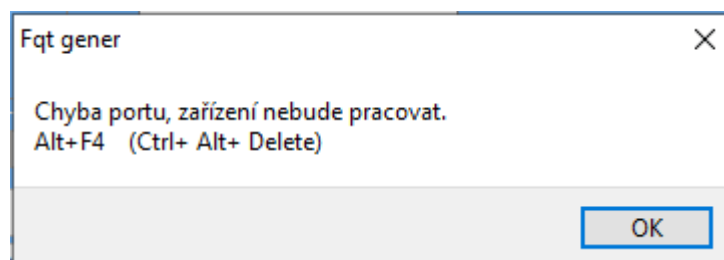
CAUTION: Sometimes, when installing other external devices, or updating Windows, or when connecting a USB external drive to a different PC USB port than the one installed, the COM Port numbers will no longer be the same.

In this case, it is necessary to check the COM Port number in the **Device Manager** and enter it into the FQT GENER program via the QM Therapy program or the FQ Tool. Another option is to uninstall and reinstall the COM Port according to the previous chapter, which is the easiest.

When the COM Port is set correctly, the program will start and the FQT GENER main window will appear:



If a PC with a USB external drive is suddenly disconnected while the program is running, even if the PC goes into sleep mode, a message will also appear:

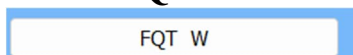


In rare cases, the program cannot be closed properly by clicking the **OK** button. The FQT GENER program must then be terminated in Windows, as instructed by the message, using the **Alt + F4** keys or directly **Ctrl + Alt + Delete**.

ATTENTION: sometimes it happens that when installing, for example, Windows updates or other processes in the system, the touchpad (mouse on the laptop) temporarily starts to respond incorrectly. Usually you just have to wait for windows to finish the operation, or you can also use an external USB mouse.

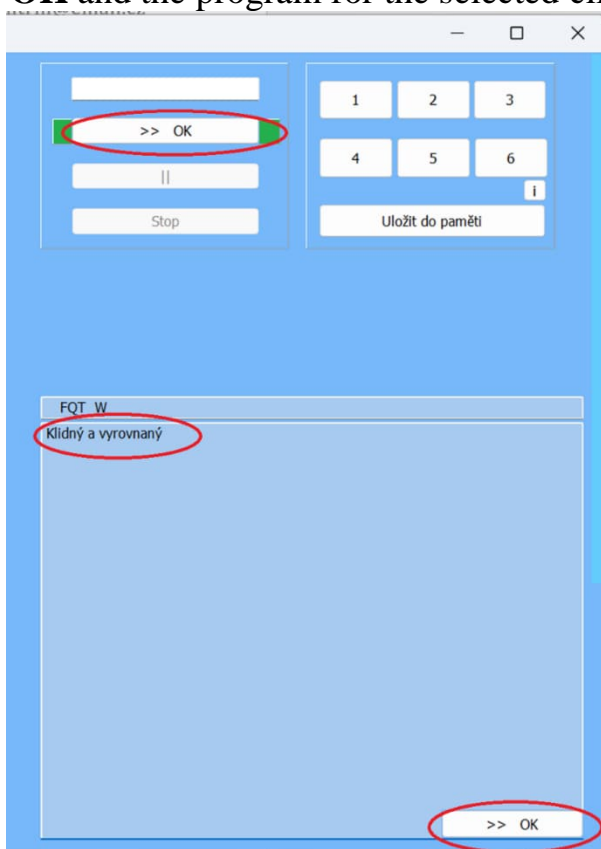
7 Function WISH

The WISH function is used to support meditation processes, it is started with a button **FQT W**



It is required to select the client with which to work, then the right part of the window will change to a new environment.

A **positive** statement (wish) is entered in the lower window. The statement must be formulated positively! Click on >> **OK** and the program for the selected client will start.



The written statement can be saved to memory by clicking the **Save to memory** button and the number button. Alternatively, click again to clear the memory. 6 memory locations are available.

8 Scope of delivery

- USB external unit FQT GQNER Qmtrín®
- AC adapter 230 V, 50 Hz / DC 24 V
- Carrying case
- USB cable
- USB mouse

Note: Programs (batches) are not included in the delivery.

Optional accessories:

- Adapter for connection to a car's cigarette lighter.

9 Support and delivery

Q m t r í n

Tel.: +420 469 81 31 24
GSM.: +420 602 62 42 55
qmtronic@ qmtronic.cz
www. qmtronic.com

10 Certificate

QM Tronic, s.r.o

Mistrovice 62

561 64 Jablonné nad Orlicí

IČO: 28792378

DIČ: CZ28792378

Tel.: +420 469 81 31 24

GSM.: +420 602 62 42 55

qmtronic@qmtronic.cz

www.qmtronic.com



 EC-DECLARATION OF CONFORMITY DICHIARAZIONE DI CONFORMITÀ CE EU-KONFORMITÄTS ERKLÄRUNG		
ENGLISH	ITALIANO	DEUTSCH
		
QM TRONIC, S. R. O. 56164 JABLONNÉ NAD ORLÍČÍ, MISTROVICE 62 CZECH REPUBLIC		
declare, that the product	dichiara che il prodotto	erklären, dass das Produkt
meets the pertinent EC Directives:	conforme alle direttive CE:	den einschlägigen EG-Richtlinien entspricht:
Electrical Apparatus Low Voltage Directive- 2014/35/ES - Electromagnetic compatibility- 2014/30/ES - CE marking- 93/68/EHS - Conformity Assessment conducted by an authorized laboratory. Certificate number. The facilities are not subject to type tests. European norms	Appareto Direttiva di Voltaggio Basso elettrica - 2014/35/ES Compatibilità elettromagnetica - 2014/30/ES - Marcatura CE - 93/68/EHS - Valutazione della conformità svolta da un laboratorio autorizzato. Numero di certificato. Il dispositivo non è soggetta a prove di tipo. Norme europee	Elektrische Betriebsmittel Niederspannungsrichtlinie- 2014/35/ES - Elektromag. Verträglichkeit- 2014/30/ES - CE Kennzeichnung- 93/68/EHS - Autorisiertes Laboratorium. Zertifikat Nummer. Apparat es ist nicht Objekt Prüfung Type. Europäische Normen

EN 60950-1 ed. 2; EN 55022 ed. 3; EN 61000-3-2 ed. 3; EN 61000-3-2 ed. 4; EN 61000-3-3 ed. 3;
 EN 61000-4-2 ed. 2; EN 61000-4-3 ed. 3; EN 61000-4-4 ed. 3; EN 61000-4-5 ed. 2;
 EN 61000-4-5 ed. 3; EN 61000-4-6 ed. 3; EN 61000-4-6 ed. 4; EN 61000-4-8 ed. 2;



Declaration of Conformity

For the following equipment :

Product Name: AC/DC Switching Adaptor

Model Designation: GSXAY (X=40 or 60 ; Y=05,07,09,12,15,18,24,48)

is herewith confirmed to comply with the requirements set out in the Council Directive, the following standards were applied :

RoHS Directive (2011/65/EU)
Low Voltage Directive (2014/35/EU) :

EN60950-1:2006+A11+A1+A12+A2

TUV certificate No : S50249612

Electromagnetic Compatibility Directive (2014/30/EU) :

EM (Electro-Magnetic Interference)

Conducted emission / Radiated emission

EN 55022:2010

Class B

Harmonic current EN61000-3-2:2006+A1:2009+A2:2009

Voltage flicker EN61000-3-3:2008

EMS (Electro-Magnetic Susceptibility)

EN55024:2010

ESD air EN61000-4-2:2009 Level 3 8KV

ESD contact EN61000-4-2:2009 Level 2 4KV

RF field susceptibility EN61000-4-3:2006+A1:2008+A2:2010 Level 2 3V/m

EFT bursts EN61000-4-4:2012 Level 2 1KV/5KHz

Surge susceptibility EN61000-4-5:2006 Level 2 1KV/Line-Line

Surge susceptibility EN61000-4-5:2006 Level 3 2KV/Line-Earth

Conducted susceptibility EN61000-4-6:2009 Level 2 3V

Magnetic field immunity EN61000-4-8:2010 Level 2 3A/m

Voltage dip, Interruption EN61000-4-11:2004 >95% dip 0.5 periods 30% dip 25 periods >95% interruptions 250 periods

Note:

The power supply is considered as a component that will be operated in combination with final equipment. Since EMC performance will be affected by the complete system, the final equipment manufacturers must re-qualify EMC Directive on the complete system again.

For guidance on how to perform these EMC tests, please refer to TDF (Technical Documentation File).

Energy-Related Products Directive (2009/125/EC) :

Ecodesign requirements for no-load condition electric power consumption and average active efficiency of external power supplies EC No.278/2009

This Declaration is effective from serial number EB6xxxxxx

Person responsible for marking this declaration :

MEAN WELL Enterprises Co., Ltd.

(Manufacturer Name)

No.28, Wuguan 3rd Rd., Wugu Dist., New Taipei City 248, Taiwan

(Manufacturer Address)

Johnny Huang/Manager, Certification Center :

(Name / Position)

(Signature)

Ted Cheng/Director, Sales Dept. :

(Name / Position)

(Signature)

Taiwan

(Place)

Apr. 20th, 2016

(Date)

Warranty card

On the electronic function devices are warranted for 24 months from the day of sale. The warranty does not apply to defects caused by improper use, become worn by running or mechanical damage. Opening the device is a loss of warranty.

Each device has its own internal number by which to trace when the device was put into operation.

Serial number:

Date: